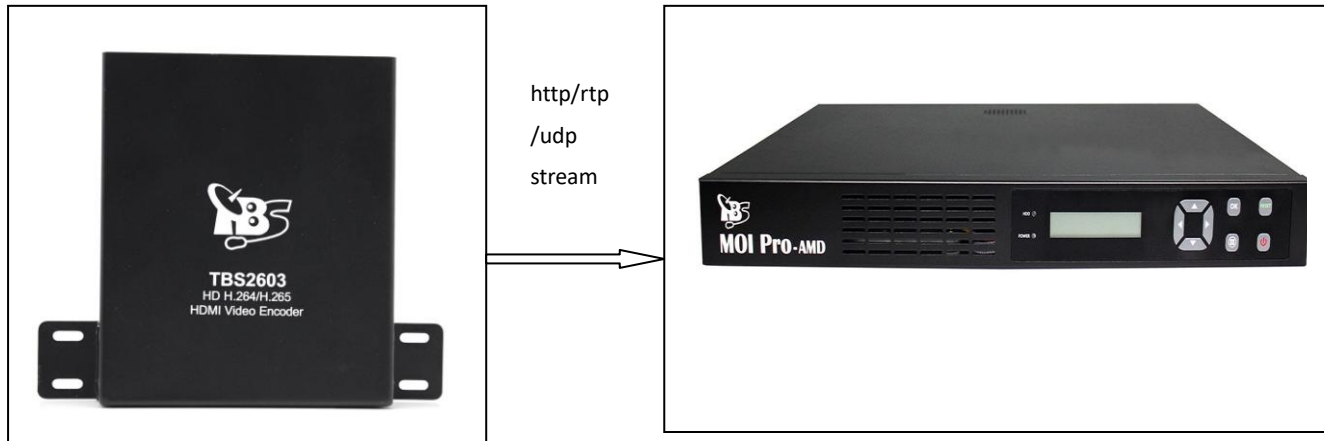


How to add Network stream to a Streaming server in Tvheadend

Hi all,

Some of our users want to add a stream to our streaming server, these streams some come from an Encoder and some come from a same streaming server. Actually, the software Tvheadend does support it.

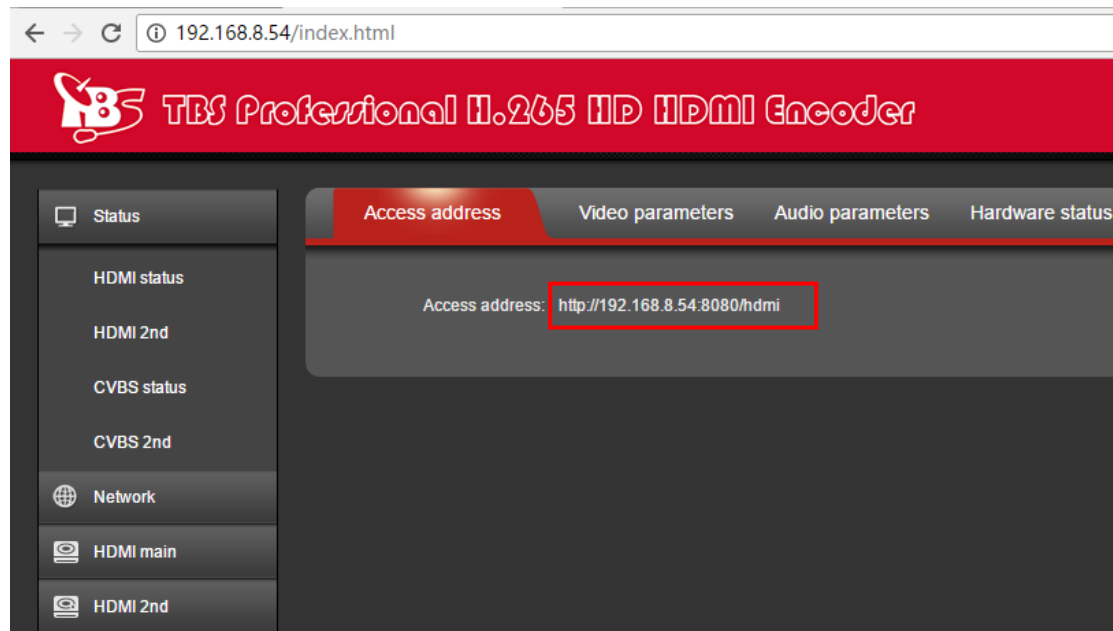
Now, we take an Encoder TBS2603 and a Streaming server MOI PRO AMD as an example. This method is different from the traditional we get channels from tuner cards first then streaming out, it makes your IPTV media source more selective:



The following explains will tell you how to configure step by step.

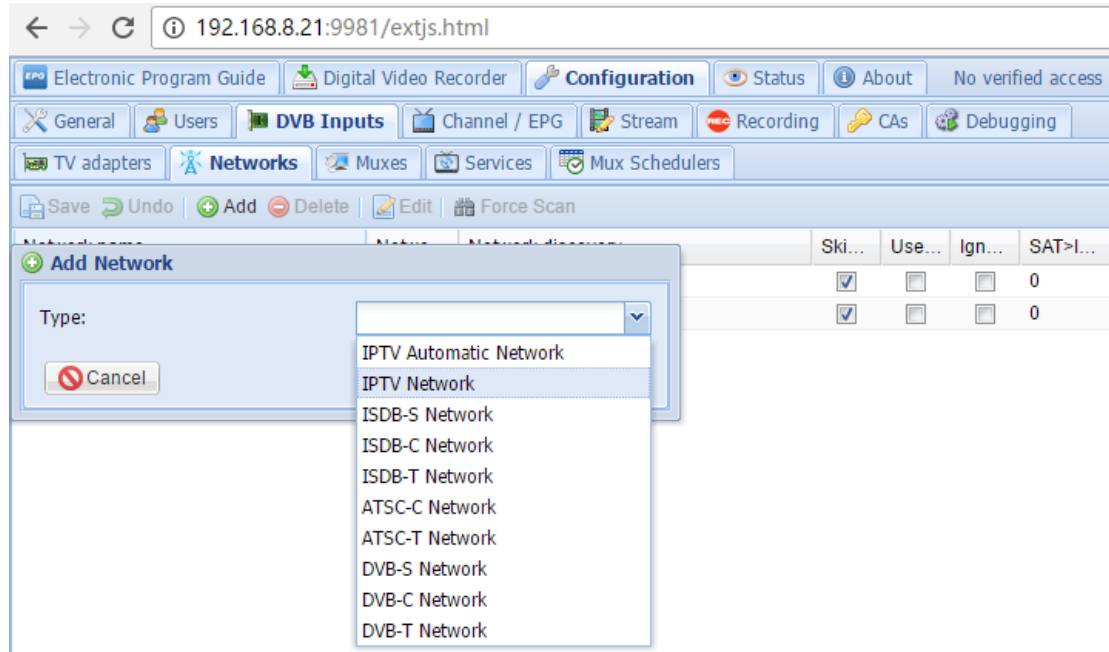
First:

Log in your Encoder, the default user name and password is root/root, configure it then get a stream, HTTP/UDP/RTP stream is suitable for Tvheadend:



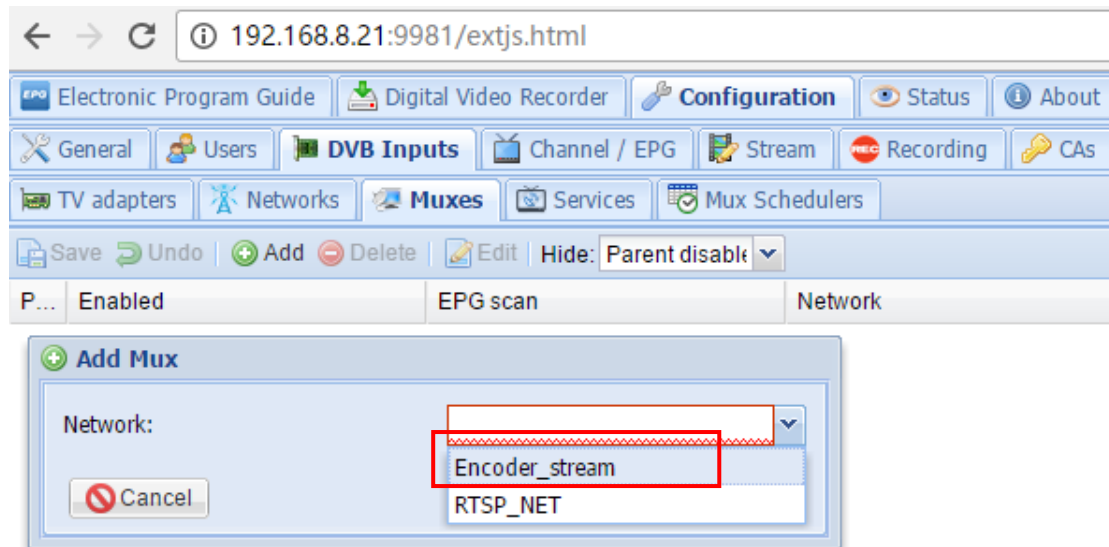
Second:

Open Tvheadend, click “Configuration”-“DVB Inputs”-“Networks” item to add a network “IPTV Network”, like this:



Third:

Click “Muxes” item directly to add a Muxe, then it will pop up a dialog, enter the URL we got from Encoder, click “create” button at last. Compared with tuner card to scan channels, the step “add network to an adapter” is omitted. Details please check the following screenshots:



+ Add Mux

Basic Settings

Enabled:

EPG scan:

Scan status:

URL:

ATSC:

Mux name:

Channel number:

Service name:

Advanced Settings

Character set:

Accept zero value for TSID:

Priority:

Streaming priority:

Substitute formatters:

Interface:

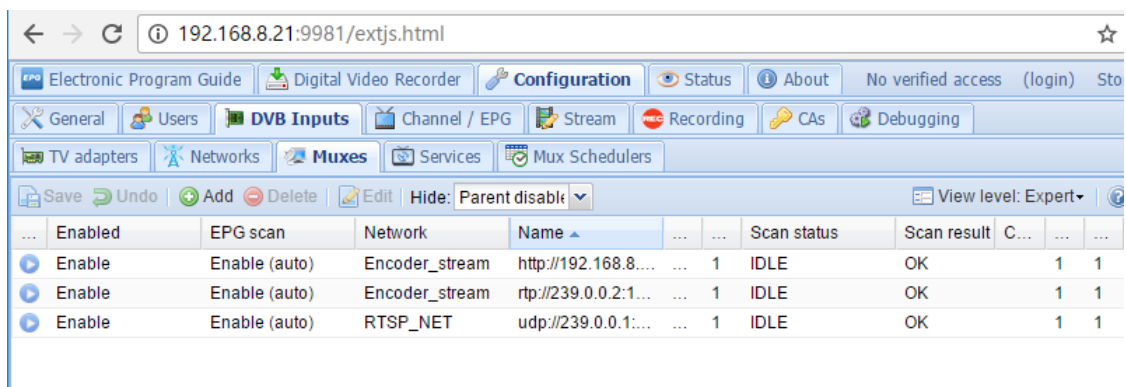
EPG name:

Icon URL:

Channel tags:

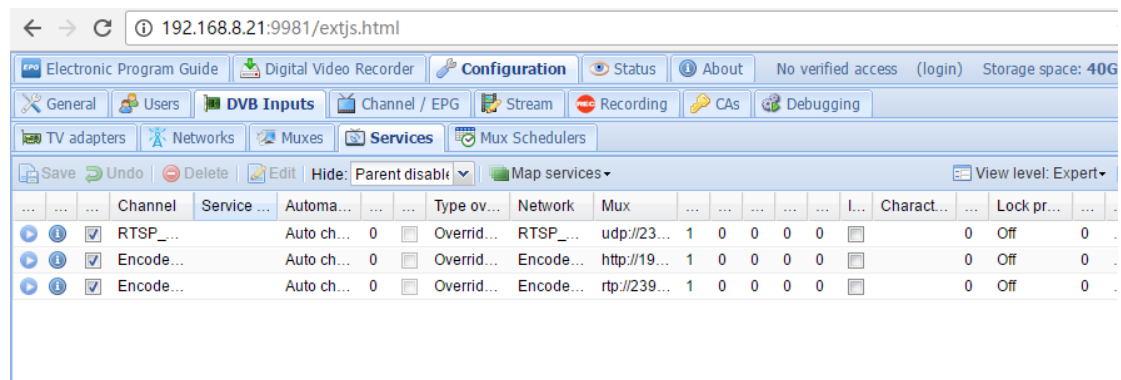
Fourth:

After a few seconds waiting, the result will come out. If it's successful, the scan result shows "ok":



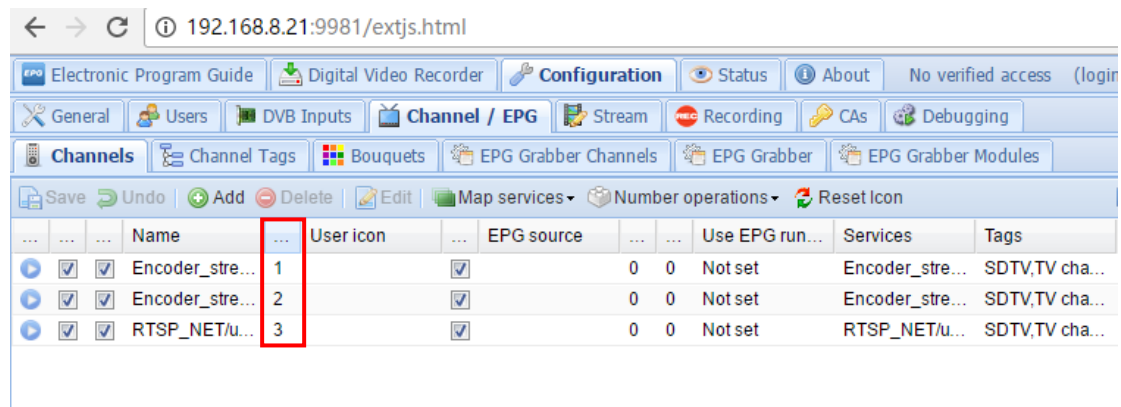
Enabled	EPG scan	Network	Name	Scan status	Scan result	C...
Enable	Enable (auto)	Encoder_stream	http://192.168.8.54:8080/hdmi	...	1	IDLE	OK	1	1	1
Enable	Enable (auto)	Encoder_stream	rtp://239.0.0.2:1...	...	1	IDLE	OK	1	1	1
Enable	Enable (auto)	RTSP_NET	udp://239.0.0.1:...	...	1	IDLE	OK	1	1	1

Now you can click “Services” item to select a service and map it out:



Fifth:

Check the channel which was mapped out in “Channel/EPG”-“Channels” item. Until now, all steps were finished. We can open a media player which support network stream to play the channels like VLC:



There are two kinds of URL output from Tvheadend:

1. URL 1:
http://192.168.8.21:9981/playlist. In this way, it’s going to play all the channels we mapped out;
2. URL 2:
http://192.168.8.21:9981/stream/channelnumber/1;
http://192.168.8.21:9981/stream/channelnumber/2; In this way, you must give them a number first then it’s going to play the channels one by one.

If you want to add more streams to the streaming server at the same time, maybe our another Encoder TBS2630 is a good choice for you, which support 16 HDMI channels input and we can get 32 streams from this product most.

In a word, it will rich your IPTV media source, and more convenient for those who don’t have tuner cards but Encoders.

Any more questions, please write email to our support at support@tbsdtv.com.

Best Regards,

TBS Support Team

Email: support@tbsdtv.com

Website: www.tbsdtv.com